



Bathing establishment Fact Sheet

Bathhouse name	Marcella
Address	Viale Europa, 36
City	Torre del Lago (Lu)
Contacts	Tel +39 0584 341874 Email giammarcogemignani@hotmail.it
Website	https://www.facebook.com/p/Bagno-Marcella-100036159505389/?locale=it_IT

TESTED BY: [Handy Superabile - Social Promotion Association](#) in summer 2023

Please note The following information refers to the verification date shown at the bottom of each card. **The Association** is not responsible for any significant changes made by the property after the visit.

Summary

Bathing establishment Fact Sheet.....	1
Tel 0584 341874 Email giammarcogemignani@hotmail.it	1
Arrival at the facility	2
Private/public parking.....	2
Pathway from the parking lot to the main entrance	2
Reception.....	3
Bar/restaurant	4
Internal Pathways and common services	5
Internal Pathways.....	5
Toilet and shower accessible to guests with reduced mobility.....	5
Changing room.....	6
Beach.....	6
Children's play area.....	7
Swimming pool.....	7
Doctors' Offices/Healthcare Facilities	8

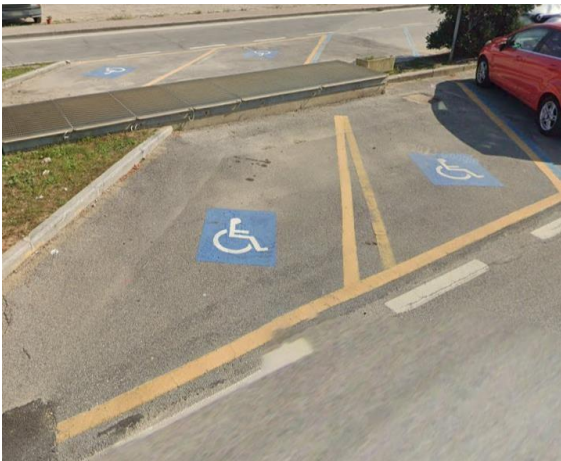

Project carried out with the contribution of the





Arrival at the facility

Private/public parking

Presence of private parking	YES
Type of private car park	gravel
Presence of parking space reserved for people with disabilities	NO
Public parking nearby	YES
Type of public car park	asphalt
Presence of parking space reserved for people with disabilities	YES
	

Pathway from the parking lot to the main entrance

Pathway from the car park to the entrance	Flat
There are markers and tactile maps	NO
Usable door/entrance width	more than 90 cm





Reception

Umbrella booking system	<input type="checkbox"/> Via web <input checked="" type="checkbox"/> By phone <input checked="" type="checkbox"/> On-site
Presence of multilingual staff	Not detected
Presence of plant plan with key to services available	NO
Presence of visuo-tactile map	NO
Bulletin board/information panels at an average height of 130 cm in a well-lit area and font size at least 14 dpi with a contrast ratio greater than 4.5:1	NO
The staff attended training courses on welcoming people with different disabilities	NO





Bar/restaurant

Type of venue	Bar/restaurant
Access to the premises	Flat
Usable door/entrance width	more than 90 cm
Bar counter	more than 100 cm
Types of tables	with central support
Space underneath the tables from the floor	72 cm
Multilingual menu	Not detected
Menus with large print fonts	NO
Braille menu	NO
Table service for people with disabilities	YES
Availability of gluten-free food	<input type="checkbox"/> bread <input type="checkbox"/> pasta <input type="checkbox"/> biscuits <input checked="" type="checkbox"/> ice cream <input type="checkbox"/> Pre-packaged foods





Internal Pathways and common services

Internal Pathways

Indicate whether the pathways connecting the entrance to the beach are flat or with ramps in addition to those already described	Obstacle-free paths
--	---------------------

Toilet and shower accessible to guests with reduced mobility

Number of toilets accessible/usable by guests with reduced mobility	1
Access to the premises	Flat
Usable width of the entrance door	89 cm
Toilet height	50 cm
Open front toilet seat	YES
Support handles	on both sides
Flexible hand shower at the side of the toilet	Choose an item.
Free space on the sides of the toilet	left 45 cm right 65 cm frontal 84/100 cm
Electric doorbell/phone	YES
Washbasin with space underneath for wheelchair	74 cm
Height from the ground on the bottom edge of the mirror	sufficient for use by wheelchair users
Baby changing table	Not detected
Accessible shower available for guests with reduced mobility	NO



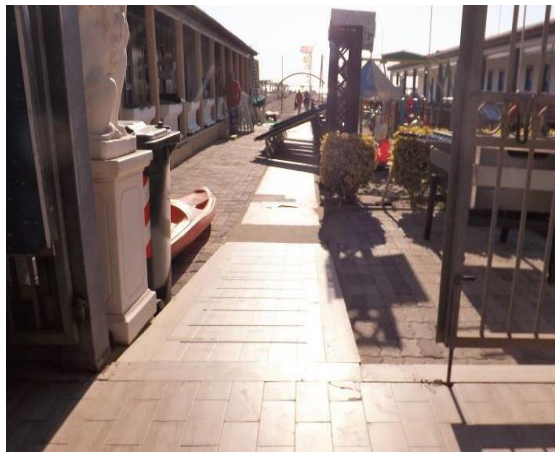


Changing room

Accessible changing room available for guests with reduced mobility	YES
Access to the premises	Flat
Usable door/entrance width	more than 90 cm
Size of the dressing room	width 265 cm and depth 190 cm
Presence of a cot	NO
Coat rack height from the ground	170 cm

Beach

Type of beach	sand
Access to the beach	via 2 ramps: the first length 600 cm, width 90 cm, gradient 8%; second length 290 cm, width 90 cm, gradient 8%
Walkway to reach the umbrellas	YES
Type of walkway	wood
Walkway width	90 cm





Removable Platform between the walkway and the umbrella station to facilitate the passage and parking wheelchair	YES
Amphibious beach chair available for helping people with reduced mobility to enjoy swimming (owned by the establishment or by association)	NO
	

Children's play area

Children's play area	inaccessible to children with reduced mobility due to sandy bottom
There are games for children with reduced mobility	NO

Swimming pool

The property has a swimming pool	NO
----------------------------------	----



Project promoted by



Regione Toscana

Doctors' Offices/Healthcare Facilities

Hospitals near the facility	Ospedale Versilia SS 1, 335, 55049 Camaione LU Telephone: 0584 6051
Other Healthcare Facilities	ASL Health District No. 12 Viareggio Piazza Buon Consiglio Viareggio Tel. Phone 0584.6056353 Dialysis service c/o HOSPITAL OF CISANELLO DI PISA Department for dialysis therapy (hemodialysis – peritoneal dialysis) in the period June - September Dialysis Holiday service with availability of n. 6 beds tel. 050 997250 – 997253 – 997256

TESTED BY: **Handy Superabile Social Promotion Association in summer 2023**

Project carried out with the contribution of the



Presidenza del
Consiglio dei Ministri
Ministro per la disabilità